

# PRATLEY®

www.frogzeggz.com  
Instruction Leaflet for  
**PRATLEY FROGZEGGZ®**

## GENERAL:

Pratley FrogzEggz is a tough, hard setting, hand mouldable plastic that is easy to use, non-toxic and highly versatile.

## PROPERTIES:

- Non-toxic
- Reusable
- Strong
- Tough
- Versatile
- Hand mouldable
- Can be sawn, drilled and painted

## PROCEDURE:

### ① Soften FrogzEggz in hot water

Pratley FrogzEggz must be heated to above 60°C for it to be soft and workable. The most convenient method is to boil water in a kettle and pour it into a cup then add the required quantity of FrogzEggz.

### ② Watch for colour change

FrogzEggz will be ready for use in about 1 minute after placing in hot water, i.e. once they change from opaque to transparent.

③ **Remove FrogzEggz from the water** with the back end of a teaspoon or similar stick to avoid burns. The FrogzEggz will clump together and come out as one.

④ **Mould**  
Hand mould and shape FrogzEggz to the desired form.

### ⑤ Colour

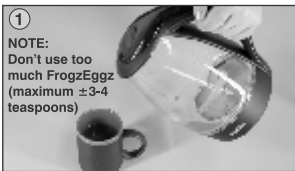
If desired, coloured pigments including Pratley "Glow-Powder" Glow in the Dark Pigment may be mixed into your FrogzEggz before moulding. Remove FrogzEggz from hot water and sprinkle the powder onto the FrogzEggz while it is still soft and manageable, fold and mix until a uniform colour is achieved. (Reheat may be necessary).

### ⑥ Cool & Set

When you are happy with your shape and design, simply leave your FrogzEggz to cool or submerge your FrogzEggz creation in cold water for it to set.

### Reheat (Optional)

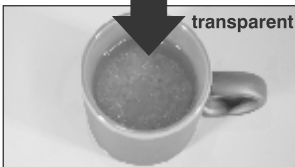
If at any time you are not happy with your design, simply submerge it in hot water again so that it can be remoulded.



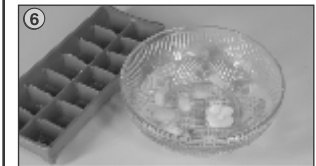
①  
**NOTE:**  
Don't use too much FrogzEggz (maximum ±3-4 teaspoons)



opaque

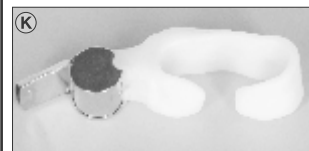
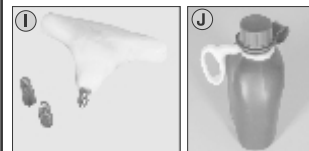
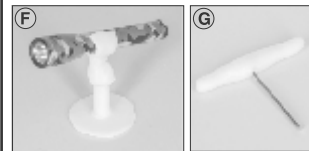
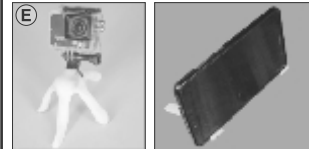
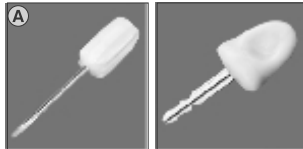


transparent



## SOME SUGGESTED USES: (visit [www.frogzeggz.com](http://www.frogzeggz.com))

- Make screwdriver handles, file handles and the like.
- Make Glow in the Dark objects.ⓑ
- Make House numbers.Ⓒ
- Make replacement plastic parts where the original has broken.Ⓒ
- Make gear knobs and car emblems/badges
- Make pistol grips.Ⓓ
- Insulate wires
- Make Fishing lures.
- Camera accessories and mounts.Ⓔ
- Flashlight holders.Ⓕ
- Grip enhancement.Ⓖ
- Disability and injury aids.Ⓗ
- Simple tool creation.Ⓘ
- Camping accessories.Ⓙ
- Sporting accessories.Ⓚ
- USB charging station and cable management.



## TIPS:

(See videos on website:  
[www.frogzeggz.com](http://www.frogzeggz.com))

- Cigarette lighters (with blue flame) or small propane burners are useful for joining (melting together) small parts.
- FrogzEggz parts can be stuck together with Pratley Powda Bond or Pratley Superglue Adhesive. **(Allow several minutes to bond).**
- Keep water heated with a hot plate if working on a large project.
- Sections can be heated individually by submerging the required area in hot water.
- FrogzEggz projects can be painted with acrylic or oil-based paints.
- Smooth surfaces by heating slightly and running your finger or a smooth object over the surface.
- Never exceed 150°C when heating, as this will damage the FrogzEggz polymer.
- Add ice to the cooling bowl to accelerate the setting process.
- Create basic mould shapes by moulding around household items as templates for creations.
- Use Pratley "Glow-Powder" pigment to make your creations glow in the dark.

## NOT RECOMMENDED FOR:

Use in environments where temperatures exceed 50°C.

**Pratley (Pty) Ltd.** P O Box 3055  
Kenmare 1745 South Africa.  
Tel: +27 11 955-2190/8  
Fax : +27 11 955-3918  
sales@pratley.co.za  
[www.frogzeggz.com](http://www.frogzeggz.com)

